



Kenya Institute of Migration Studies (KIMS)

*in collaboration with*



Maastricht University



*Directorate of Immigration Services*



CPA

COMMONWEALTH  
PARLIAMMENTARY  
ASSOCIATION

# 67th Commonwealth Parliamentary Conference

## Human Trafficking, Refugees and Immigration across the Commonwealth: Open Doors or Building Walls

**Dr. Gabriel Lubale, PhD., MIHRM.,OGW**

Sydney, New South Wales, Australia

3rd – 8th November 2024



Kenya Institute of Migration Studies (KIMS)

*in collaboration with*



**Maastricht University**



*Directorate of Immigration Services*

# Outline

Trends in regional and international frameworks

Kenya policy shift: Refugee Act 2021

What is Shirika Plan?

How parliaments and policymakers can best engage:

Refugee Resource Centres



Kenya Institute of Migration Studies (KIMS)

*in collaboration with*



**Maastricht University**



*Directorate of Immigration Services*

# Trends in regional and international frameworks

# Kenya policy shift: Refugee Act 2021

But while the legislative and regulatory framework is now more favourable *de jure* to refugees' participation / inclusion in the local market, the question remains *de facto* of how quickly, under what conditions, and in which sectors this socio-economic integration can really take place?

**Legal background**

**Refugees Act 2021, on 23 November 2021, and the law came into effect on 22 February 2022, 90 days from the date of enactment.**

**What the GOK wants to do in theory (in collaboration with UNHCR and stakeholders).**

Shifting its approach to refugee management by transforming refugee camps into integrated settlements under the multi-year “Shirika Plan,”

Creating an environment that not only supports the socioeconomic inclusion of refugees but also helps build opportunities for the Kenyan people.

**In line with the Global Compact on Refugees, it has taken concrete steps through several initiatives to improve the conditions for refugees and the communities hosting them.**

**What should also be done in practice (and will require political and advocacy effort)?**

**Create new refugee identity cards (Alien cards) to access mobile money and banking services.**

**Lift restrictions on freedom of movement. Freedom of movement is essential for refugees to access employment and start and run businesses.**

**Simplify and clarify the system for work permits. While refugees in Kenya have the legal right to apply for work permits in Kenya, in practice, these are Rarely granted**

**Address the backlog in asylum registrations and the issuance of a refugee identity card, without which they cannot access other important documents, including work permits.**



Kenya Institute of Migration Studies (KIMS)

*in collaboration with*



**Maastricht University**



*Directorate of Immigration Services*

## What is Shirika Plan?

# What is Shirika Plan?

## Explanation



## 2023 World Refugee Day

- \* “As a government, we are committed to creating an enabling environment that supports the socio- economic inclusion of refugees and the collective efforts to build the resilience of host communities. This approach aims to reduce reliance on humanitarian help from host governments and other humanitarian agencies, and to make refugees self-reliant and important players in the growth of host countries’ economy.”
- \* H.E. Musalia Wycliffe Mudavadi, Prime Cabinet Secretary



Kenya Institute of Migration Studies (KIMS)

*in collaboration with*



Maastricht University



*Directorate of Immigration Services*

# What is Shirika Plan? .. contd

Reflections

2023 World Refugee Day



“The Shirika Plan is a forward leaning and progressive policy that presents an exciting opportunity to create a greatly improved protection environment for refugees and change the ‘refugee narrative’ not only in Kenya but throughout Africa and beyond”.

Mr. Filippo Grandi, UN High Commissioner Refugees





Kenya Institute of Migration Studies (KIMS)

*in collaboration with*



Maastricht University



*Directorate of Immigration Services*

# What is Shirika Plan? .. contd

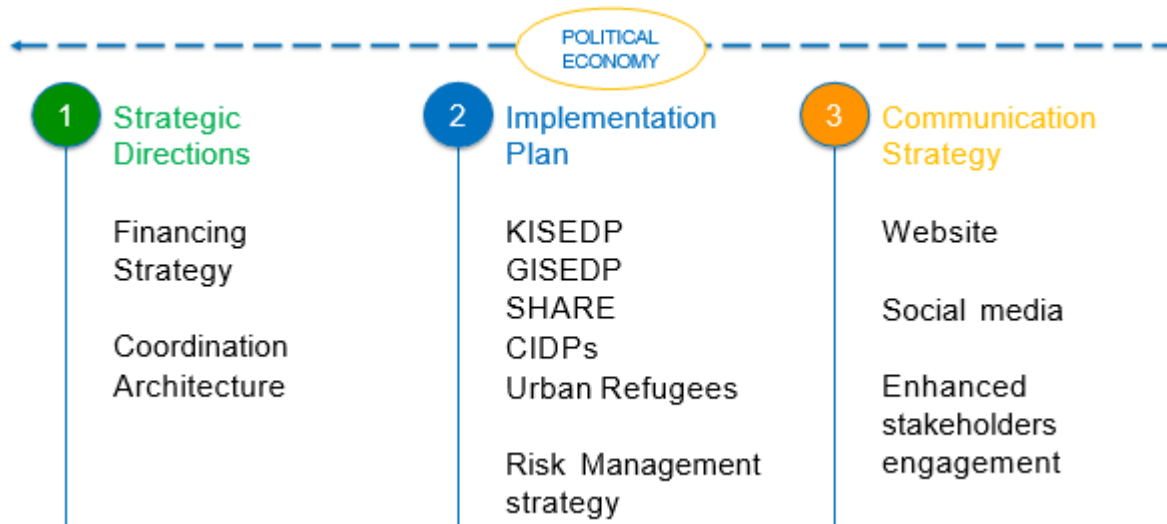
Theme of 20<sup>th</sup> June 2023

Theme of 20<sup>th</sup> June 2024



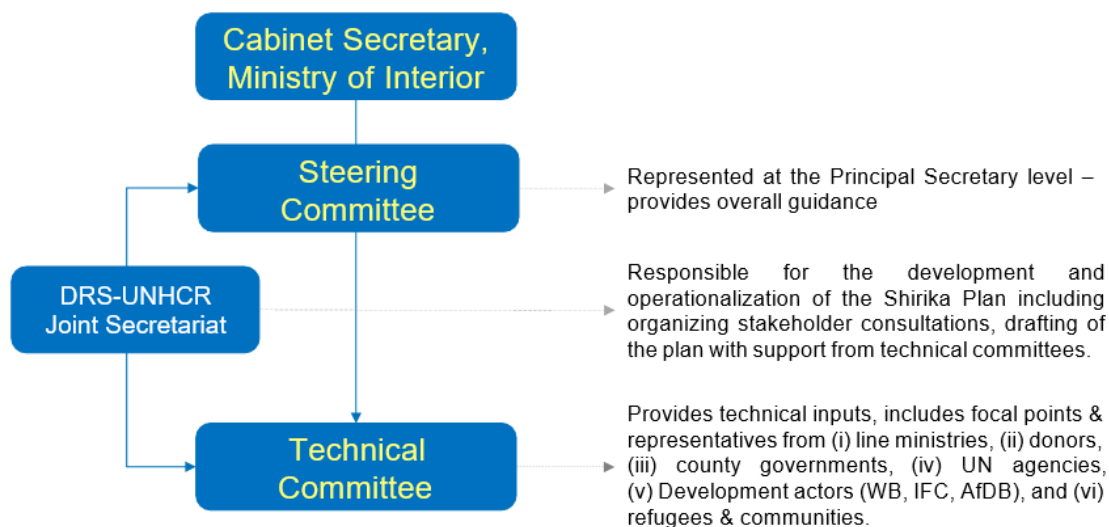
# What is Shirika Plan? .. contd

## SHIRIKA Plan: Strategic Components



# What is Shirika Plan? .. contd

## Shirika Plan: Architecture (coordination)





Kenya Institute of Migration Studies (KIMS)

*in collaboration with*



Maastricht University



*Directorate of Immigration Services*

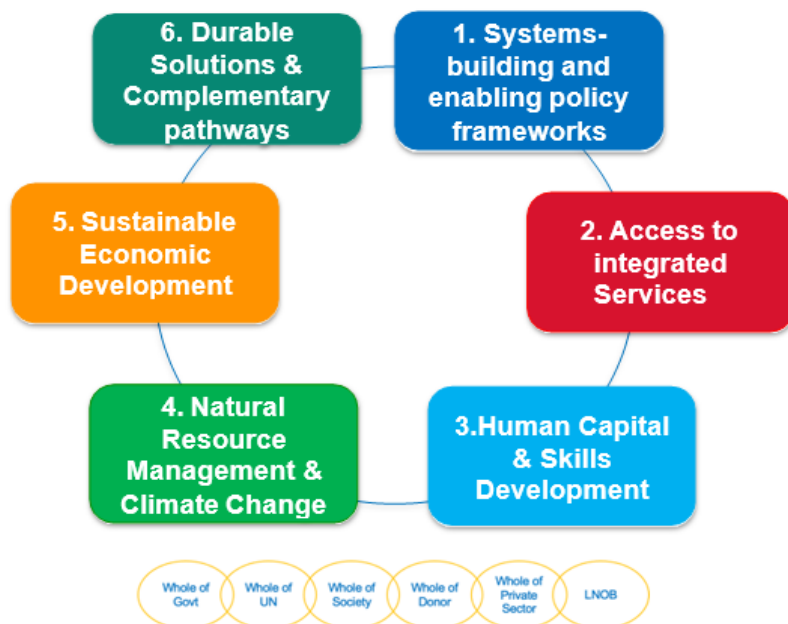
# What is Shirika Plan? .. contd

## Shirika Plan: Key tactical components

The development of the Shirika Plan is within the context of years of collective effort to transform the refugee response model in Kenya and to implement innovative approaches, building on the existing frameworks and initiatives that serve as its building blocks. Further, Whole of Government (WoG), Whole of Society (WoS), Leaving No One Behind (LNOB), and Delivering As One are plan's integral part.

# What is Shirika Plan? .. contd

## Shirika Plan: Key tactical components ..cont



1. **Systems-building and enabling policy frameworks:** Policy and legal frameworks, effective institutions, Rule of Law and Justice
2. **Integrated services:** Education, Health, Shelter, Water, Sanitation, Electricity, Social Protection
3. **Skills Development:** Market-based Livelihoods and technical trainings, Market development, Financial services
4. **Natural Resource Management:** Sustainable natural resource management, resilient agriculture, Environment, Climate Change, Disaster Risk Reduction.
5. **Sustainable Economic Development:** Population, Technology, Economic infrastructure, Rural and urban businesses and markets development
6. **Durable Solutions and Complementary Pathways:** Voluntary return, advocacy, Cross-border assessments, Resettlement



Kenya Institute of Migration Studies (KIMS)

*in collaboration with*



*Directorate of Immigration Services*

# Collaborative Agreement between UNHCR and the UoN

UNHCR Co-labs

MR2P Co-Lab





# Kenya Institute of Migration Studies (KIMS)

*in collaboration with*



*Directorate of Immigration Services*

