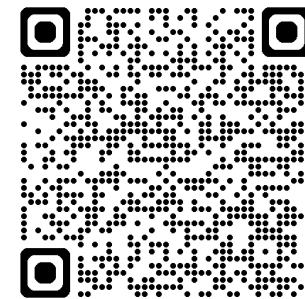
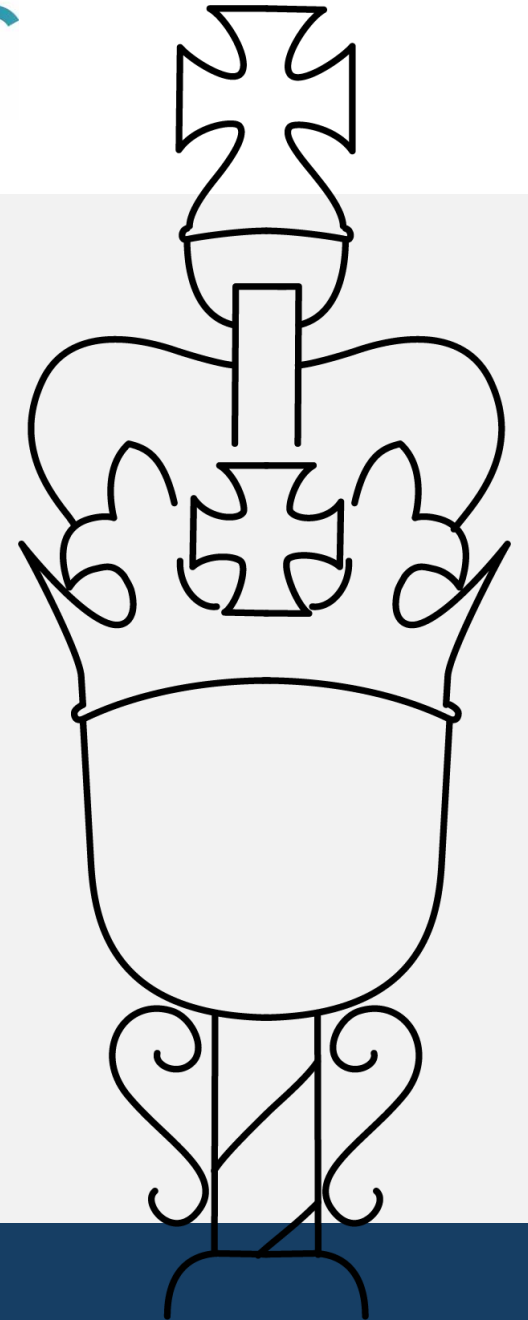


Joint Workshop: Gender and National Climate Planning: moving from commitment to scalable action

Room B1, ICC,
10:30-12:00, Tuesday 5 November 2024



FIND OUT MORE HERE.



Housekeeping



- Note that there will be **official photography and videography** throughout the programme.
- Personal photography is permitted where it does not disrupt or obscure for others, and please keep **mobile phones** to essential use only.
- **Questions and contributions** are permitted only when the Chair opens the floor and should be indicated by a raised hand.
- **Fire exits** are clearly marked, and in the case of an alarm refer to venue staff.
- In the case of illness or incident, alert a member of the venue or secretariat staff, to direct you to the onsite **First Aid Team**.



Joint Workshop: Gender and National Climate Planning: moving from commitment to scalable action, Room B1, ICC, 10:30-12:00, Tuesday 5 November 2024

Follow us #67CPC

FIND OUT MORE HERE.

Respect and Safeguarding



” *The CPA Headquarters Secretariat is committed to, and recognises the value of, maintaining environments of mutual respect, courtesy and dignity at all its events and programmes. Any breach of this policy will be treated as a disciplinary matter, which may result in notification of the relevant regulatory authority or refusal from attending future CPA events.*

- To **view the Policy or submit a concern**, please follow the link on the website under ‘Respect and Safeguarding at the CPA’ or scan the QR code on this slide.
- The designated safeguarding officer for the CPA Secretariat is **Sharon Moses**, Head of Human Resources.



Feedback



- Five minutes have been allocated at the end of every workshop for participants to **complete a short feedback form.**
- Follow the **QR code**, or scroll to the bottom of the Workshop webpage, via the Conference Programme, on the **CPA Website.**
- We request that you make every attempt to do so as your feedback is an important mechanism to guide future programming.



Joint Workshop: Gender and National Climate Planning: moving from commitment to scalable action, Room B1, ICC, 10:30-12:00, Tuesday 5 November 2024

Follow us #67CPC



FIND OUT MORE HERE.

Seychelles

A Big

Oceanic

State



“Climate change remains the foremost challenge facing humanity, and failure to address its effects will devastate current and future generations”

**President
Ramkalawan**





Effects of climate change

- sea level rise,
- changes in rainfall patterns,
- severe flooding and landslide,
 - coastal erosion,
- ocean acidification and coral bleaching,
- and rising temperatures among other severe consequences.





Water Management

ENSURING WATER

SECURITY FOR ALL USES



The plans for up to 2027 are:

- to develop, protect and manage the country's water resources for the economic, social and environmental benefits of all on an equitable and sustainable basis;
- to ensure the availability of water at good quality to all sectors of the economy;
- to promote and facilitate wise, more efficient consumption of water;
- to maintain high levels of financial and technical performance of water supply services by applying modern management practices and to develop an appropriate legal, regulatory and institutional framework for the optimal integrated management of the country's water resources.





Renewable Energy

THE KEY TO A CLEAN
ENERGY FUTURE



The plan for up to 2030 is:

- Seychelles is committed to achieving 5% and 15% of its total electrical energy demand through Renewable Energy which was set for 2020 and 2030 respectively.





Individual Responsibility

PROTECT THE EARTH FOR
FUTURE GENERATIONS



Why is climate change important to human life?

- “Clean air and water, and a livable climate are inalienable human rights. And solving this crisis is not a question of politics. It is our moral obligation -if, admittedly, a daunting one” – Leonardo di Caprio





Thank you

Gervais Henrie

+2482568844

ghenrie@nationalassembly.sc

Seychelles



GENDER AND NATIONAL CLIMATE PLANNING

MOVING FROM COMMITMENT TO SCALABLE ACTIONS: TONGA

Hon. Dulcie Elaine Tei
Standing Committee on Environment and Climate Change
Legislative Assembly of Tonga



BACKGROUND - TONGA

- ▶ Tonga is one of the most vulnerable countries to the adverse effects of climate change and natural disasters
- ▶ World Risk Report 2017 – Tonga 2nd most-at-risk country

ROLE OF GENDER IN MEDIATING IMPACTS OF CLIMATE CHANGE

- ▶ ***Tonga's Joint National Action Plan 2 on Climate Change and Disaster Risk Management 2018-2028***
- ▶ Recognises that climate change and disasters affect men, women, children, people with disabilities, the poor and the elderly, in different ways
- ▶ Gender, disability and vulnerability **must be placed as the centre of all planning and climate change, disaster preparedness and response activities.**



ROLE OF GENDER IN MEDIATING IMPACTS OF CLIMATE CHANGE

- ▶ ***Tonga's National Policy on Gender and Development***
- ▶ The more we understand the values, needs and aspirations through a gender lens, the better prepared we are to protect these and the more resilient Tongan society will become





MAINSTREAMING GENDER INTO NATIONAL POLICIES

- ▶ ***Tonga Gender and Environment Survey 2022 Report***
- ▶ Women and men have distinct roles in managing natural resources
- ▶ Women are most vulnerable to climate change impacts due to their socio-economic roles
- ▶ Calls for integrating gender considerations into environmental policies and increasing women's involvement in environmental governance

FOSTERING WOMEN'S PARTICIPATION IN CLIMATE ACTIVITIES

- ▶ ***Tonga Climate Change Policy 2016***
- ▶ to improve knowledge on gender and community-based perspectives and capacity for adaptation, and for responding to climate change and natural disasters
- ▶ to develop and implement a strategy for supporting communities, including women, youth and vulnerable groups to directly access relevant funding to implement development plans that are fully aligned with the goals and targets of a Resilient Tonga.



FOSTERING WOMEN'S PARTICIPATION IN CLIMATE ACTIVITIES



National Women's Empowerment and Gender Equality Policy 2019-2025

* to create equal conditions to respond to natural disasters and climate change and strengthen women's resilience to climate change and disasters

*Ministry of Internal Affairs (MIA) with the National Disaster Risk Management Organisation (NDRMO) work closely with stakeholders to provide activities and programs to increase recognition of women's role in climate action and to strengthen women's participation in climate actions

FOSTERING WOMEN'S PARTICIPATION IN CLIMATE ACTIVITIES

- ▶ **Legislative Assembly – Tonga Youth Parliament 2024**
- ▶ 62% of participants were young women
- ▶ provides a space for youth to discuss and address climate change impacts and actions
- ▶ **Parliament's Standing Committee on Environment and Climate Change**
- ▶ in support of Tonga's Second Nationally Determined Contribution
- ▶ planted 3000 mangroves in 1 day - 2023
- ▶ launched the **Parliament's Tree Planting Initiative in 2024**



CONCLUSION

- ▶ More work to be done
- ▶ Gender-sensitive and gender-inclusive approaches must be considered and adopted
- ▶ Networking, information sharing and communications are crucial

--Malo 'aupito --





Gender and National Climate Action Planning

**Bridging Commitments and Scalable Climate
Action**

67th Commonwealth Parliamentary Conference

Marianne Gilchrist (BA/LLB honours)

Gender-Differentiated Impact of Climate Change:

- **80%** of people displaced by climate change worldwide are women (UN Women, 2022).
- Globally, women have **two-thirds** of the legal rights of men (World Bank, 2024)
- Women represent **70%** of the world's agricultural workers but often lack access to resources (UNDP, 2023).



Watch a special video on the intersect of gender and climate [HERE](#).



Women as Agents of Change:

- Women-led businesses are **more likely** to implement sustainable practices (HSBC 2021)
- *Initiative: The WE Empower UN SDG Challenge*
- Gender equality and women's empowerment in environmental work has been linked to **improved economic outcomes** such as greater national GDP and greater crop production (IUCN, 2024)
- Yet...women are not represented at **decision making** levels
 - **16%** of ministers of environment-related ministries are women.
 - **34%** Women's Participation on Party Delegations at COP28, the same percentage as 10 years ago.

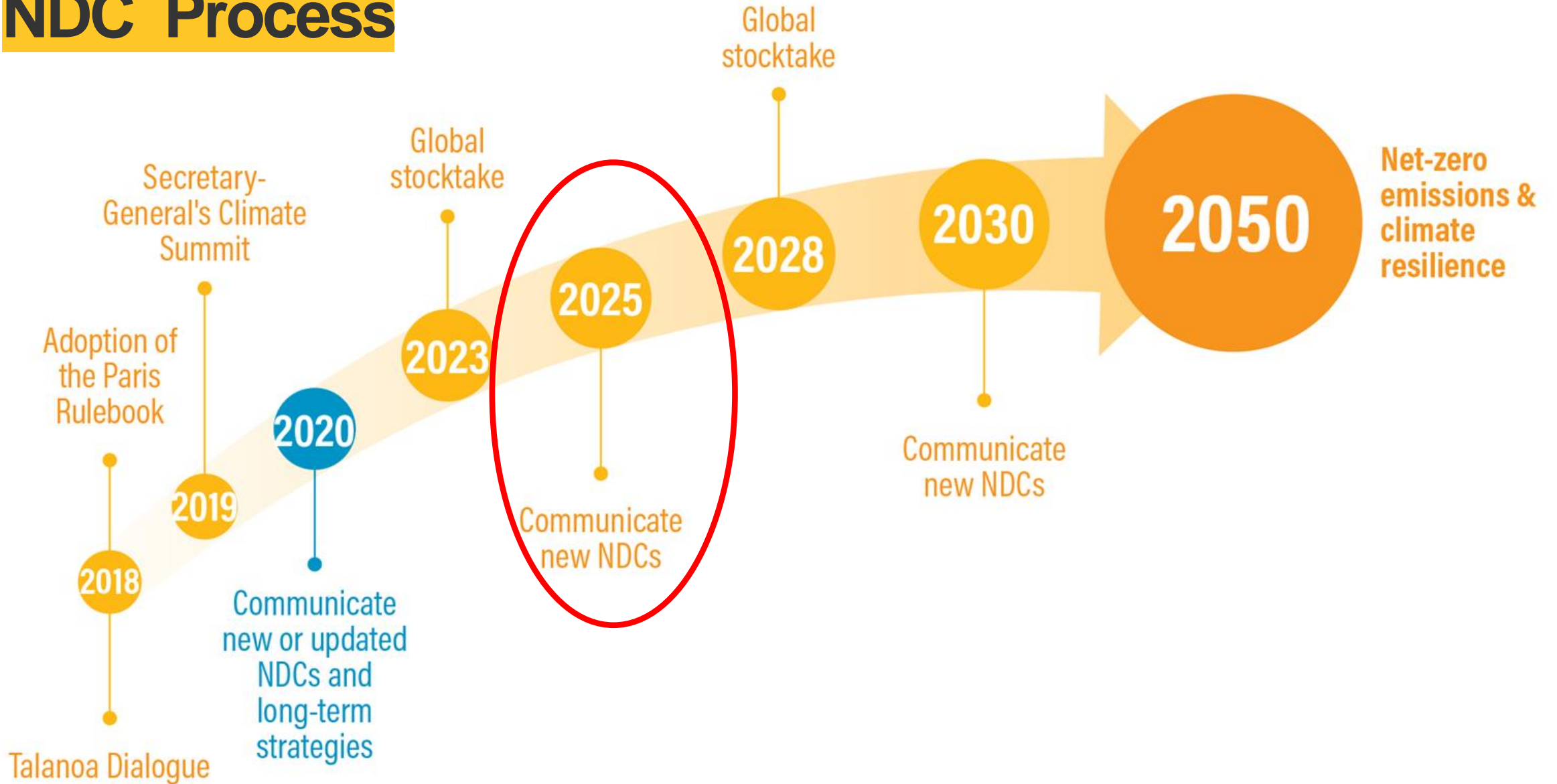
WE
EMPOWER

A Global Challenge for
Women Entrepreneurs
powering UN Sustainable
Development Goals



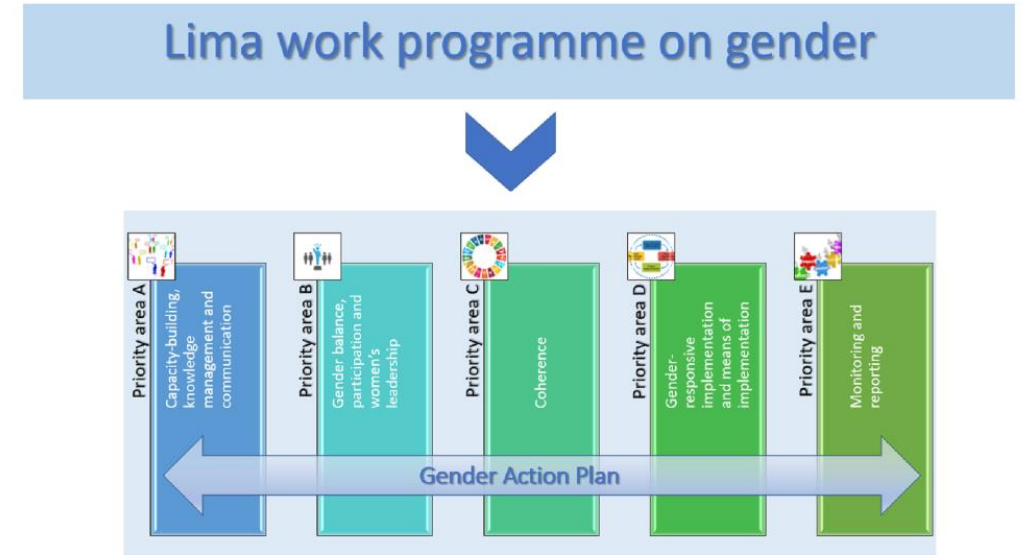
Eunice Newton Foote - the first person to theorize that higher carbon dioxide levels would lead to a warmer planet (1856)

NDC Process



The Role of NDCs:

- **85%** of the latest NDCs referenced gender considerations, a major leap forward since 2015 (UNFCCC, 2024).
- Countries with gender-responsive NDCs see **15-20%** improvement in resilience outcomes (IUCN, 2021).
- NDCs must include sex-disaggregated data and gender indicators.
- *Initiative: The Gender + Environment Data Alliance provides critical data for gender-responsive climate action.*



GEDA 
GENDER + ENVIRONMENT
DATA ALLIANCE

Case Studies of Gender Responsive NDCs:

- Kenya (2020)
 - Encourages women's leadership in renewable energy and sustainable agriculture.
 - Includes gender-responsive strategies to support women farmers.
 - Addresses challenges like drought and water scarcity faced by women farmers.
- Vietnam (2020)
 - Women-led climate adaptation projects, specifically in areas vulnerable to flooding.
 - Supports women's access to climate-smart agricultural training.



How Scientists and Universities can support Climate Action

Network of Experts



New Carbon Economy Consortium



Climate Action Tools



TURN IT AROUND!

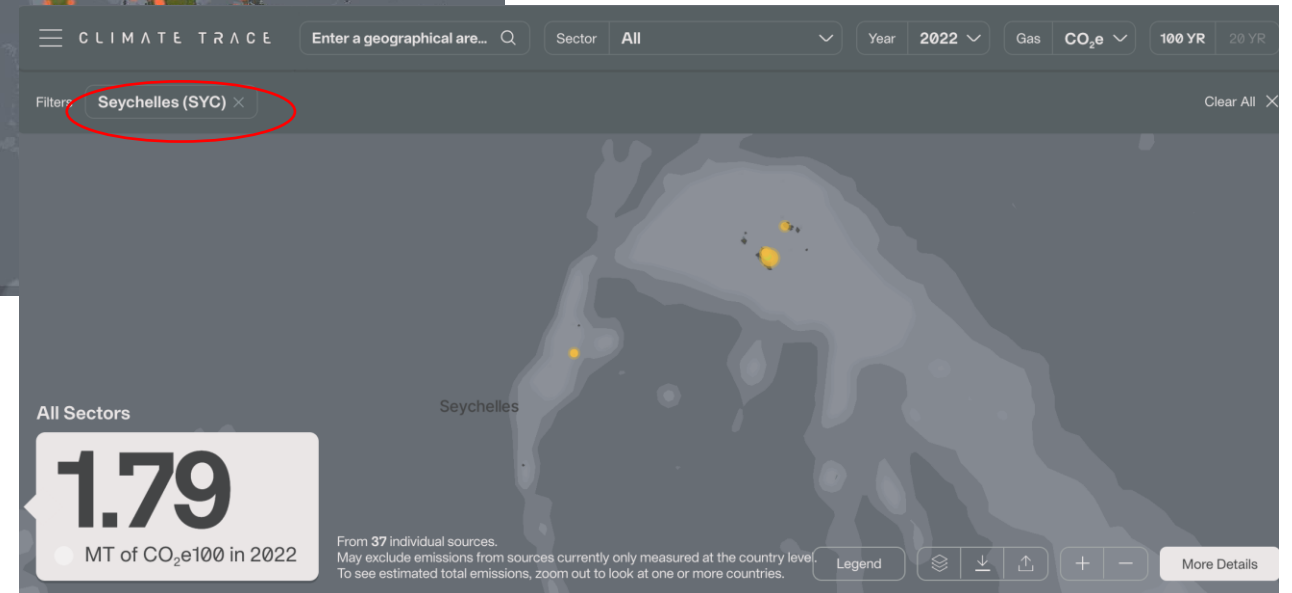
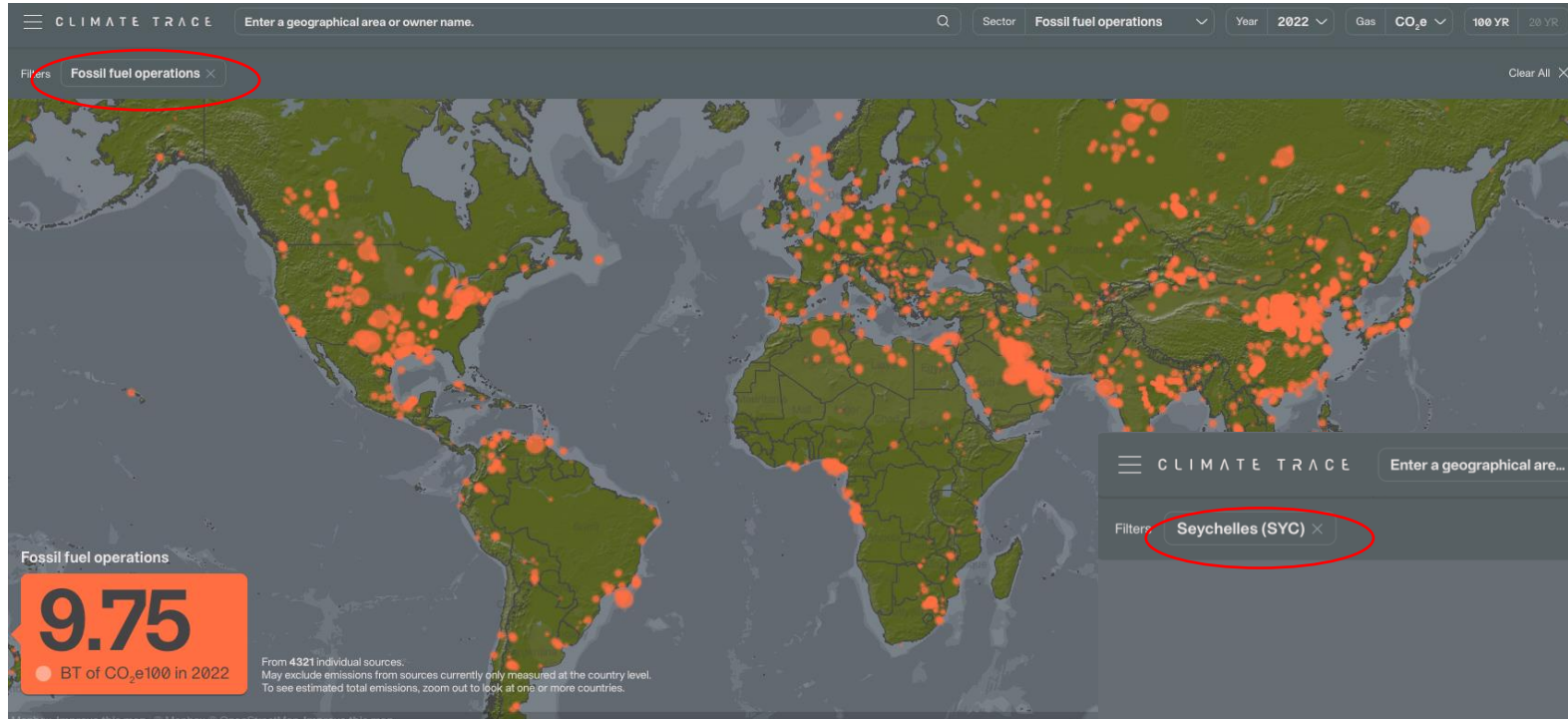


Climate TRACE

<https://climatetrace.org/>



CLIMATE
TRACE.



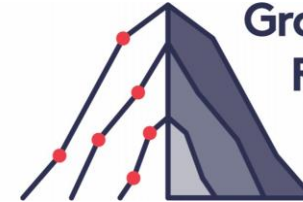
Watch video on Climate
TRACE [HERE](#).

Climate Change Laws of the World

<https://climate-laws.org/>



Climate Change Laws
of the world



Grantham
Research Institute
on Climate Change
and the Environment

[Home](#) > Search results

Find documents containing

Related phrases

Exact phrases only

Region

All

Published jurisdiction

Start typing...

First published

in last year

in last 5 years

Showing the top 100 results for "renewable energy"

Download data (.csv): [this search](#) | [wh](#)

All **Legislation** Policies UNFCCC Litigation

For example: Laws, Acts, Constitutions (legislative branch)

Relevant

Renewable Energy Act 2011

Malaysia · 2011 · Legislative · 96 matches in documents

The Renewable Energy Act 2011 establishes a system of feed-in tariffs for renewable energy. The system sets fixed tariff rates for electricity generated from solar, biomass, biogas, and energy. Depending on the type of resource used, these tariffs are guaranteed for a 16 to 21 years.

Seychelles

Sub-Saharan Africa

Political Groups

G77, SIDS, AOSIS

Global Climate Risk Index

118

World Bank Income Group

High income

Share of Global Emissions

0%

Documents

Featured searches

Resilient infrastructure

Fossil fuel divestment

Net zero growth plan

Sustainable fishing

All 19

Legislation 4

Policies 11

UNFCCC 4

Litigation 0

[Seychelles. National Communication \(NC\). NC 3. Biennial Update Report \(BUR\). BUR 1.](#)

Seychelles · 2024 · UNFCCC

[Seychelles First NDC \(Updated submission\)](#)

Seychelles · 2024 · UNFCCC

Watch video on Climate Change Laws [HERE](#).

Moving from Commitments to Scalable Action - Gender:

- Prioritize gender mainstreaming in NDCs and national climate policies.
- Support women entrepreneurs working on climate solutions.
- Ensure equal representation of women at decision making levels.



Diana Mbogo

Transitioning sardine fishing industry to renewable energy (lamps and drying).

*Founder, and Managing Director,
Millennium Engineers Enterprises Ltd,
Tanzania*



Edda Aradottir

Permanent conversion of captured CO2 into stone stored underground.

*Co-Founder and CEO, Carbfix
Iceland*

Moving from Commitments to Scalable Action - NDCs:

- Actively get involved in your countries NDC development.
- Use climate action tools to create more ambitious climate commitments and adhere to them.



UNDP's Climate Promise

UNDP's Climate Promise is the world's largest offer of support to countries on national climate pledges under the Paris Agreement. These pledges, or Nationally Determined Contributions (NDCs), are crucial stepping stones towards net-zero emissions and meeting the Paris goals. The initiative supports over 120 countries, in collaboration with over 35 partners and is a major contribution to the NDC Partnership.

As of July 2022, 100 Climate Promise countries had submitted enhanced NDCs to the UNFCCC, representing 22.21% of global emissions and 84% of developing countries. Of these submissions:

Mitigation

89%

have increased mitigation ambition, of which 100% include energy targets.

Adaptation

95%

increased adaptation ambition, often aligning to National Adaptation Plans.

Inclusion

96%, 97%

include gender and youth considerations, respectively, reflecting broad stakeholder engagement.

What makes UNDP's Climate Promise unique?

Bringing together strong partners



Strong country presence and partner networks



Connecting the national and global



Aligning climate change and development

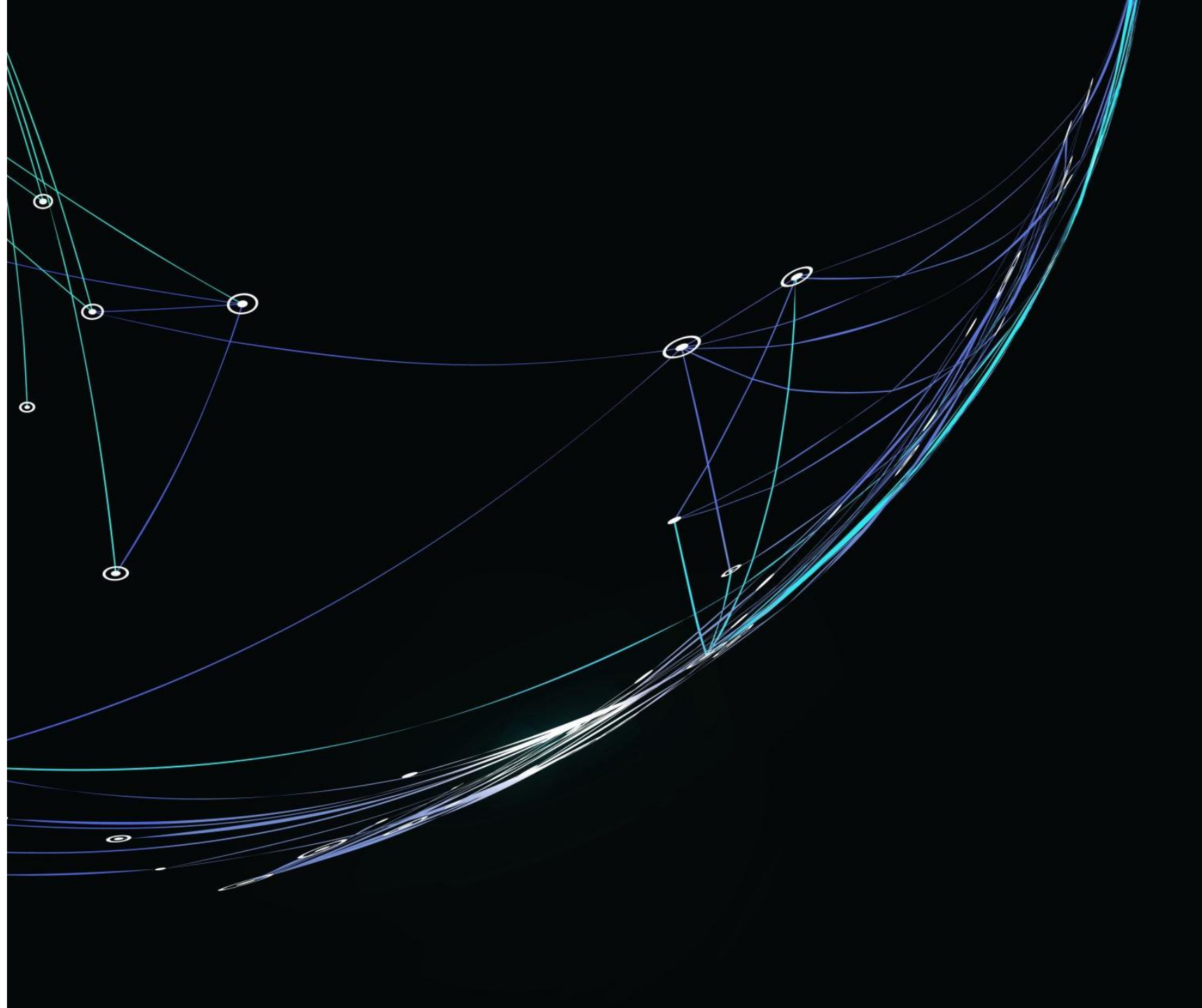


Thank You

Marianne Gilchrist

marianne.gilchrist@asu.edu

*Please get in touch to join
our Parliamentarian Climate
Education Advisory
Committee.*





Saint Lucia

CLIMATE CHANGE AND GENDER IN SAINT LUCIA

By: Honourable Alvina Reynolds



Saint Lucia has an estimated population of over 184,000 people as of 2023.



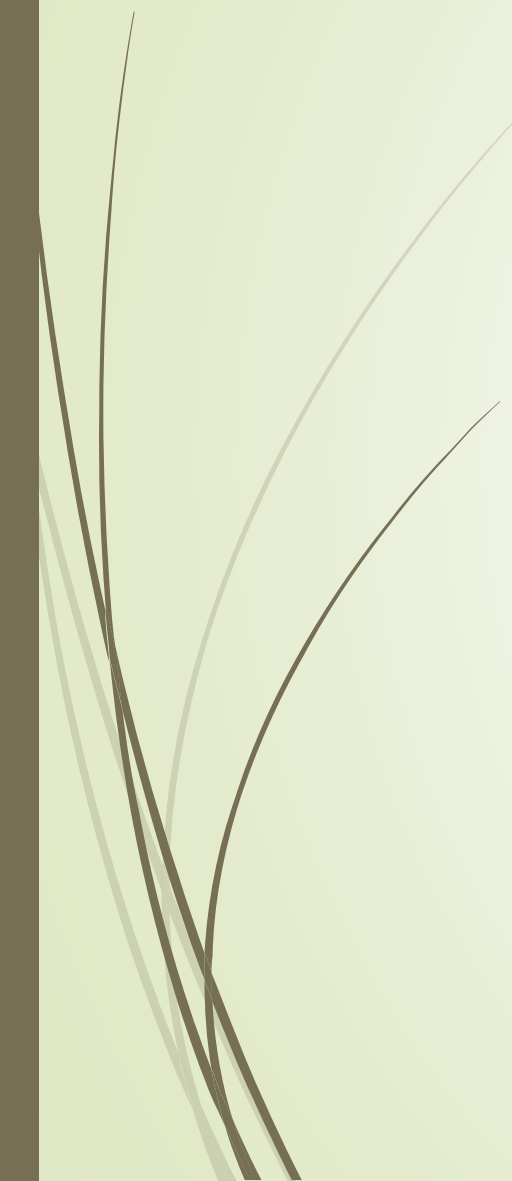
Vulnerable Groups Prone to Climate Related Disasters

- High risk groups vulnerable to climate related disasters include:
- female headed households
- children
- persons with disabilities and
- the elderly





Vulnerabilities to Climate Change

- ▶ Small geographic area makes island prone to disasters on country-wide proportions
 - ▶ Located in one of the highest risk areas on the planet
 - ▶ Agricultural sector provides primary source of livelihood security, household food security and incomes for 22% of the population
 - ▶ Change and climate variability are strong determinants of the well-being of the vulnerable and marginalized rural populations
- 

Fallen banana trees after heavy rain



Boats on the road near the seafront




Fallen tree across the road





National Climate Change Planning

- Development of **Saint Lucia's Climate Change Adaptation Policy in 2015** through the Ministry of Sustainable Development, Energy, Science and Technology
 - Policy serves as a guide for implementing efforts to address the impact of climate change through a comprehensive, coordinated and participatory approach to the national sustainable development agenda and to ensure the preservation of the way of life for Saint Lucians.
- 




Saint Lucia Adaptation Plan (2018-2028)

- Outlines a 10 - year process for adaptive and coordinated action to address climate change nationally
- Aims to create the enabling environment needed and fast track climate change and disaster management actions in the country
- Serves as a means to identify immediate, medium and long-term climate change adaptation needs and develop implementing strategies and actions to address those needs

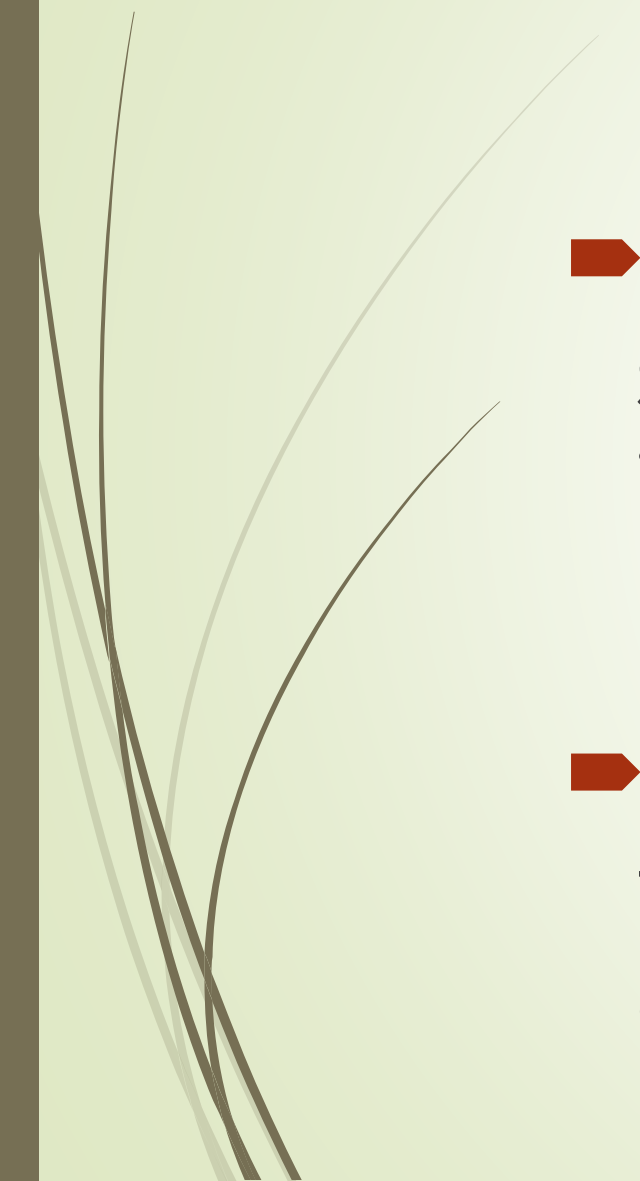


Saint Lucia Adaptation Plan (2018-2028)

- Organized in Seven (7) Priority Areas;
 - Agriculture (crops and livestock)
 - Fisheries
 - Education
 - Health and Tourism
 - Infrastructure and Spatial Planning
 - Natural Resource Management
 - Water
- 



Saint Lucia Adaptation Plan (2018-2028)

- Policy outlines six (6) objectives and seven (7) guiding principles for its implementation
 - Aims to carry out adaptation through facilitation, implementation and financing.
- 

National Adaptation Plan (NAP) (2018-2028)

- Inclusion of gender in the NAP
- A section outlines the approach to mainstream gender across all activities involved in the NAP process, aimed at decreasing gender-based vulnerabilities, provides gender equality in decision-making and ensures the implementation of adaptation measures do not add additional burden particularly to women nor does it promote domination over others.
- The **National Climate Committee (NCCC)** is the coordinating mechanism for Saint Lucia's Climate Change Adaptation Policy and NAP (Government of Saint Lucia,2018a)

National Climate Change Committee (NCCC)

- The advisory mechanism consist of a wide cross section of representatives of government agencies, Civil Society Organizations, private sector and academia
- Consultations have been held to review the implementation of those actions advocating for the priority sectors
- Efforts are ongoing to develop the guidelines for infrastructure, health and education

Climate Change Resilient School





THANK YOU

ANY QUESTIONS ?

- *Honourable Alvina B. Reynolds*
- *President of the Senate of Saint Lucia*

Recommendation

Parliaments should make efforts to access climate financing to enable parliamentary action, ensuring gender is mainstreamed into National Climate Plans.

